

ビダリータ

## Lento

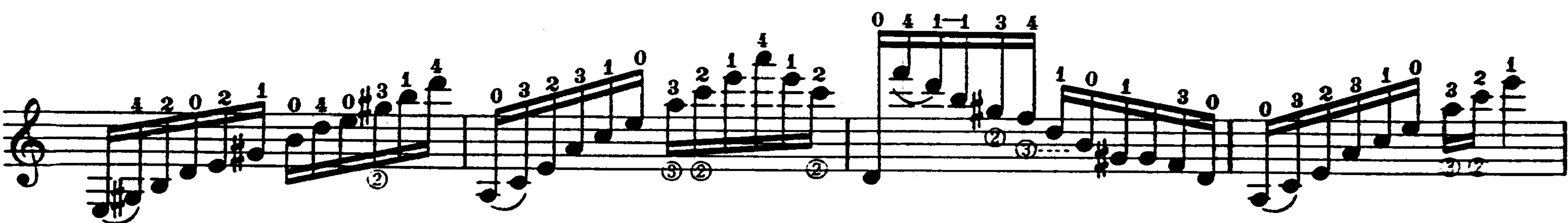
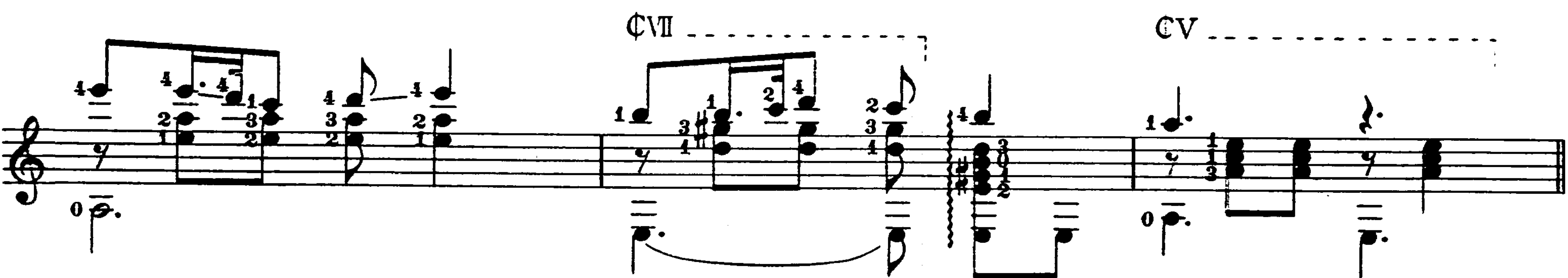
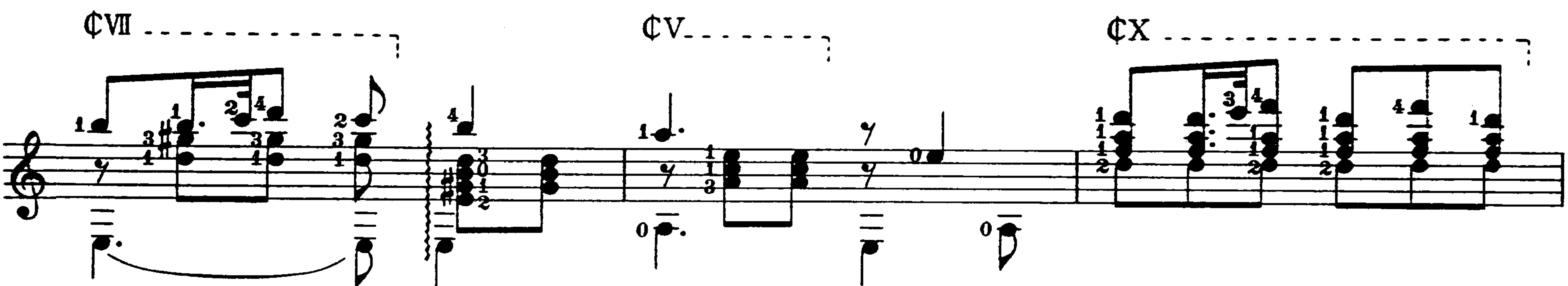
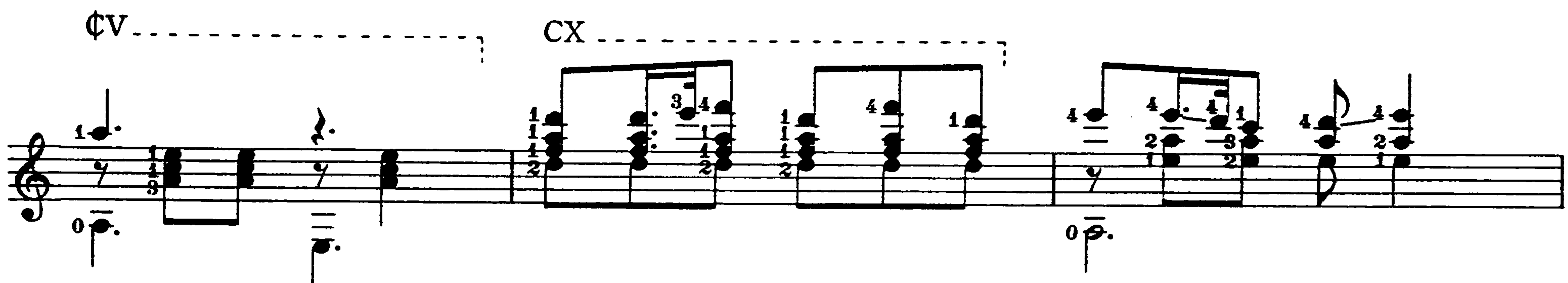
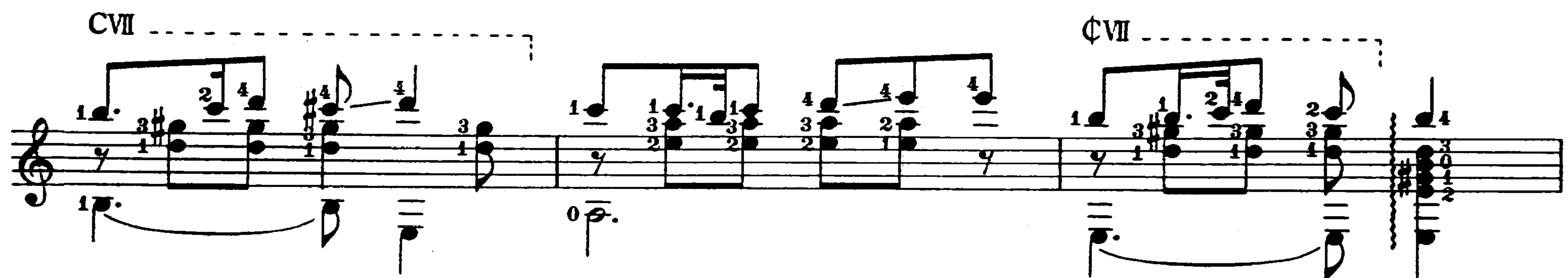
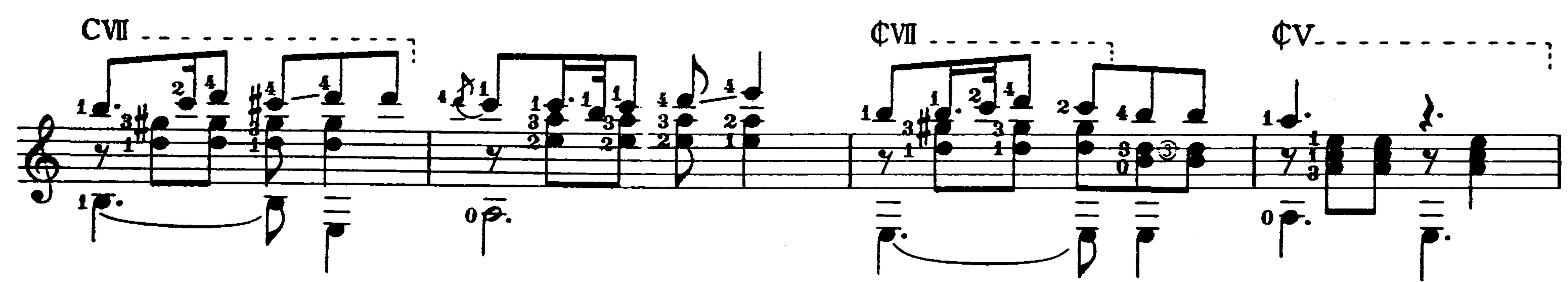
**Agustin Barrios Mango**

A musical score for the song "The Rose Tree". The score is written on a single staff with a treble clef. It begins with a key signature of one sharp (F#) and a 2/4 time signature. The melody is written in a simple, folk-like style. The lyrics "The Rose Tree" are written below the staff. The score includes a bridge section marked "C V" and a final section marked "C X". The score is written in a single system with a key signature of one sharp (F#) and a 2/4 time signature. The melody is written in a simple, folk-like style. The lyrics "The Rose Tree" are written below the staff. The score includes a bridge section marked "C V" and a final section marked "C X".

[illegible]

A musical score for the song "The Rose Tree". The score is written on a grand staff with a treble and bass clef. The melody is in the treble clef, and the bass line is in the bass clef. The key signature has one sharp (F#), and the time signature is 3/4. The melody consists of several measures, including a triplet of eighth notes and a quarter note. The bass line includes a triplet of eighth notes and a quarter note. The score is written in a simple, clear style, suitable for a children's songbook.

A musical score for the song "The Rose Tree". The score is written on a single staff with a treble clef. It features a melody line with various notes, rests, and ornaments. The melody is divided into four measures, each labeled with a Roman numeral: ♯V, ♯X, ♯VII, and ♯V. The first measure is marked with a "3" and a "4", indicating a triplet. The second measure is marked with a "3" and a "4", indicating a triplet. The third measure is marked with a "3" and a "4", indicating a triplet. The fourth measure is marked with a "3" and a "4", indicating a triplet. The score includes a key signature of one sharp (F#) and a time signature of 3/4. The melody is accompanied by a bass line with notes and rests. The score is written in a style that suggests it is a historical or traditional manuscript.





First staff of musical notation. It features a treble clef and a key signature of one sharp (F#). The notation includes various fingerings (e.g., 4, 2, 0, 2, 1; 0, 4, 0, 3, 1, 4; 0, 3, 2, 3, 1, 0; 3, 2, 1, 4, 1, 2; 4, 1-1, 3, 4; 1, 0, 1, 3, 0, 2; 0, 3, 2, 3, 1, 0; 3, 2, 1, 4, 1, 2) and a 'p.' dynamic marking. The staff ends with a double bar line and a repeat sign.

Second staff of musical notation. It features a treble clef and a key signature of one sharp (F#). The notation includes various fingerings (e.g., 4, 1-1, 3, 4; 1, 4, 3, 1-1, 4; 4, 1, 3, 0, 1; 3, 2, 4, 2, 0, 4; 2, 3, 1, 4, 0, 1; 2, 0, 1, 0, 2, 1; 2, 0, 1, 4, 0, 1) and a 'p.' dynamic marking. The staff ends with a double bar line and a repeat sign.

Third staff of musical notation. It features a treble clef and a key signature of one sharp (F#). The notation includes various fingerings (e.g., 4, 1-1, 3, 4; 1, 0, 1, 3, 0; 0, 3, 2, 3, 1, 0; 3, 2, 1, 4, 0, 1; 2, 0, 1, 0, 2, 1; 2, 0, 1, 4, 0, 1) and a 'p.' dynamic marking. The staff ends with a double bar line and a repeat sign.

Fourth staff of musical notation. It features a treble clef and a key signature of one sharp (F#). The notation includes various fingerings (e.g., 4, 1-1, 3, 4; 1, 0, 1, 3, 0; 0, 3, 2, 3, 1, 0; 3, 2, 1, 4, 0, 1; 2, 0, 1, 0, 2, 1; 2, 0, 1, 4, 0, 1) and a 'p.' dynamic marking. The staff ends with a double bar line and a repeat sign.

Fifth staff of musical notation. It features a treble clef and a key signature of one sharp (F#). The notation includes various fingerings (e.g., 4, 1-1, 3, 4; 1, 0, 1, 3, 0; 0, 3, 2, 3, 1, 0; 3, 2, 1, 4, 0, 1; 2, 0, 1, 0, 2, 1; 2, 0, 1, 4, 0, 1) and a 'p.' dynamic marking. The staff ends with a double bar line and a repeat sign.

Sixth staff of musical notation. It features a treble clef and a key signature of one sharp (F#). The notation includes various fingerings (e.g., 4, 1-1, 3, 4; 1, 0, 1, 3, 0; 0, 3, 2, 3, 1, 0; 3, 2, 1, 4, 0, 1; 2, 0, 1, 0, 2, 1; 2, 0, 1, 4, 0, 1) and a 'p.' dynamic marking. The staff ends with a double bar line and a repeat sign.